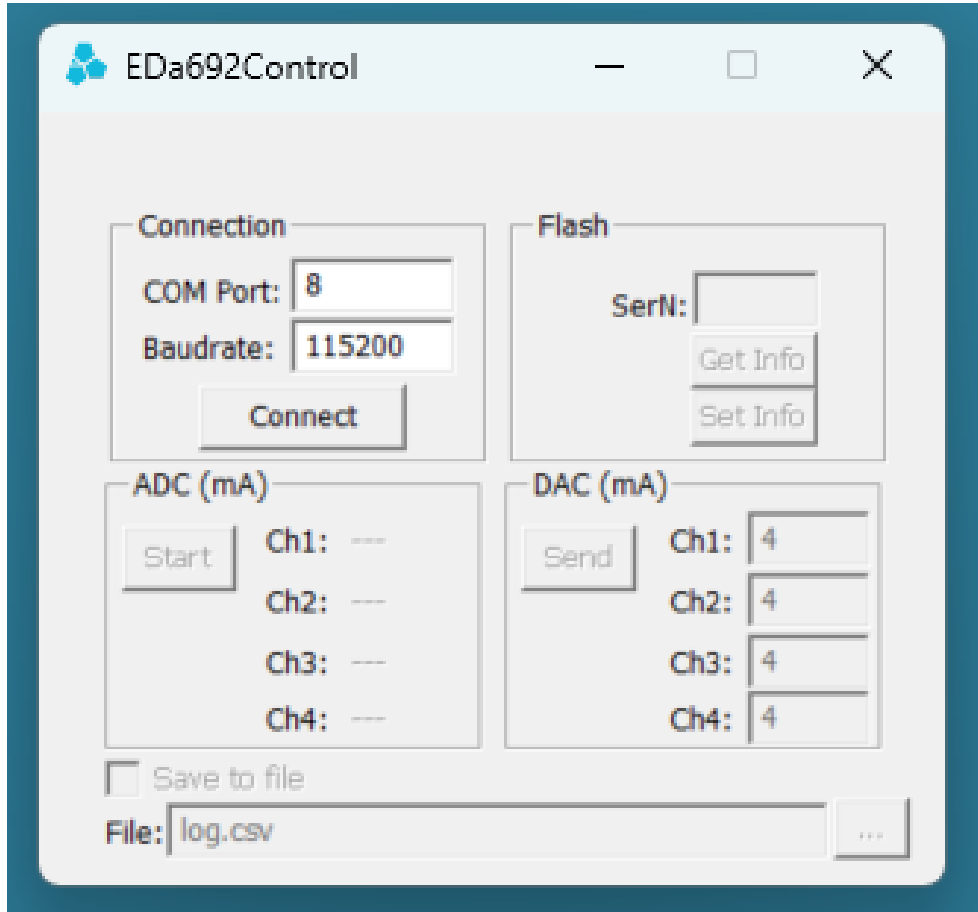
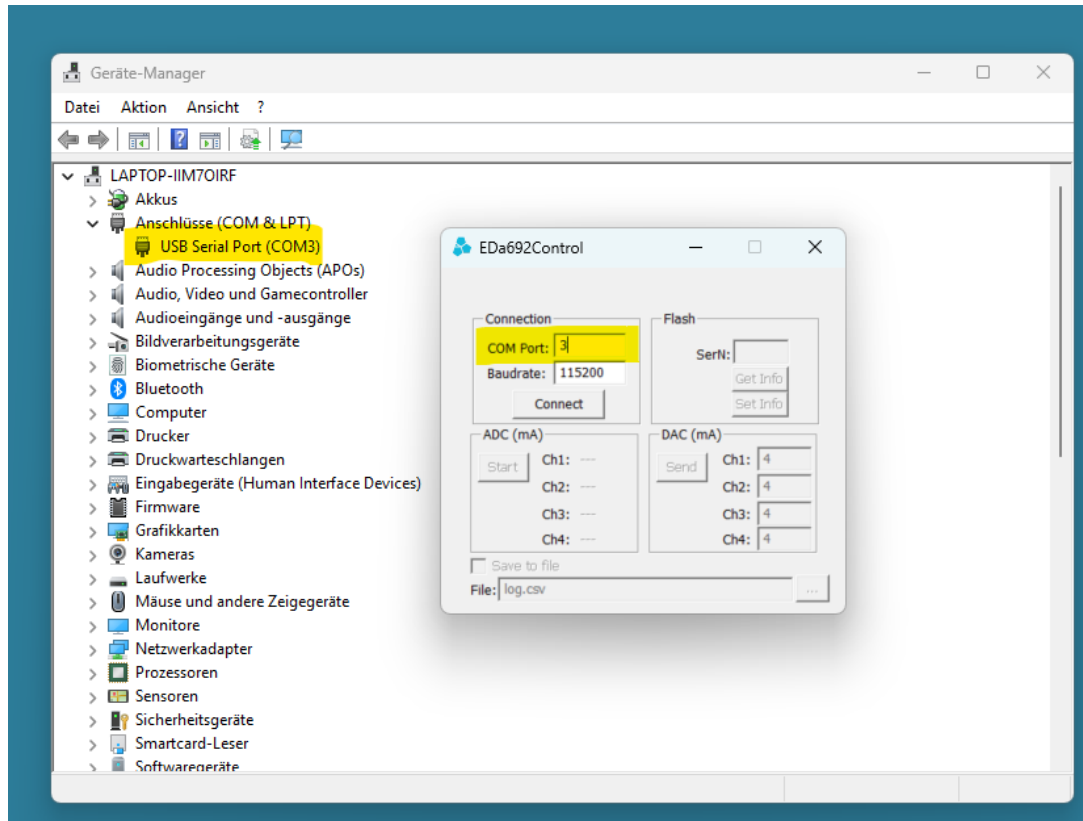


Open software



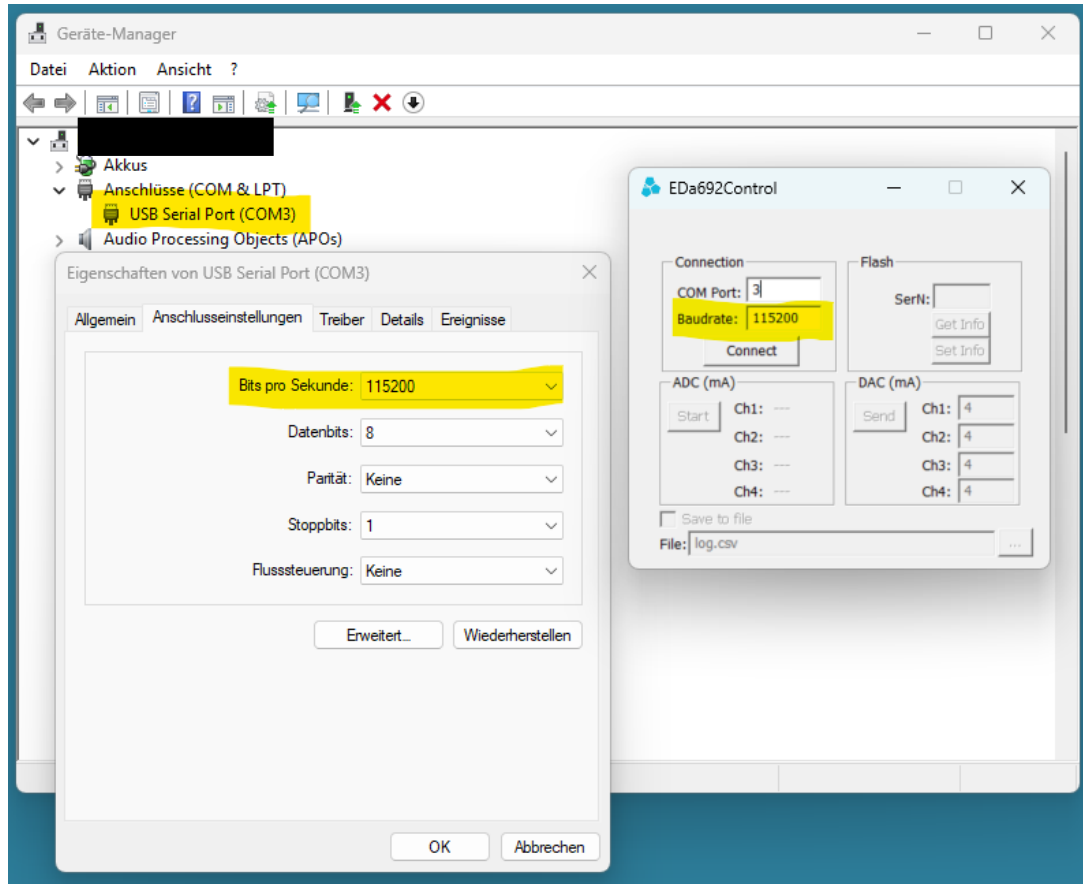
- Choose the right COM port, which you can see in the Device Manager.
- Change the Baudrate of the COM port in the Device Manager to 115200. Typically, it set to 9600.

Select COM port



- Set the right COM Port in the software.

Set Baudrate



- Check in the properties of the COM port, if the right Baudrate of 115200 is set.

Start

- Press connect and than start

